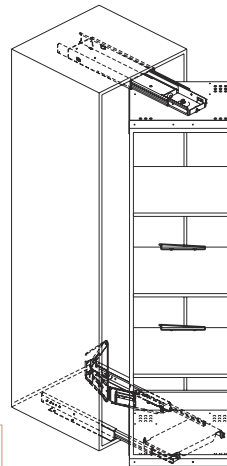


Media Access Center

Accuride CBMAC-100

Features and Benefits:

- 300 lb. load rating*
- Accommodates shelving units 20 3/4" wide by 18" deep and up to 55" in height (customer supplied)
- Full 20° extension with a 90° rotation in BOTH directions
- Detent in and out
- Cable management system built in
- Power strip and cable ties included
- Compatible with electronic cabinet mounting (EIA standards)
- Swivel plate dimensions are 21" wide by 18"



Text Change

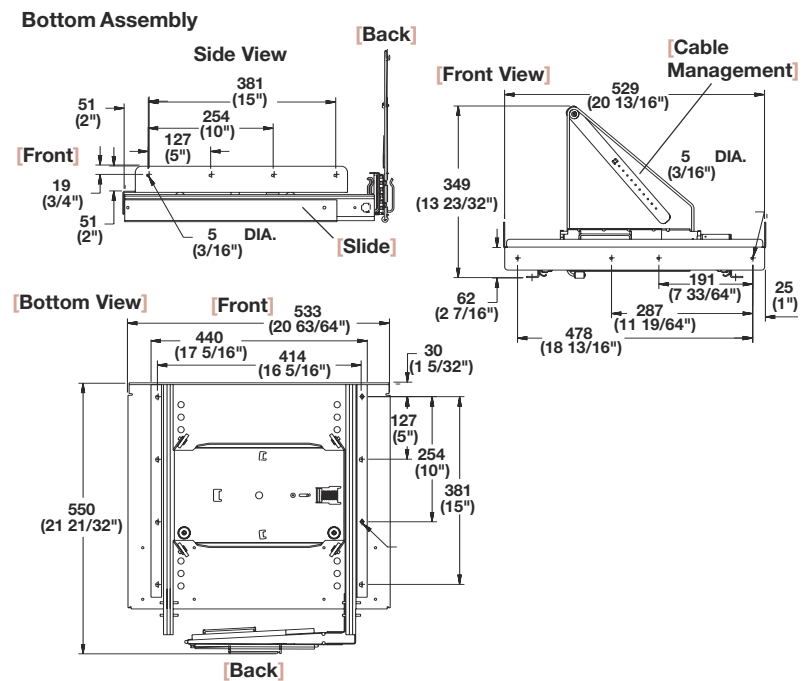
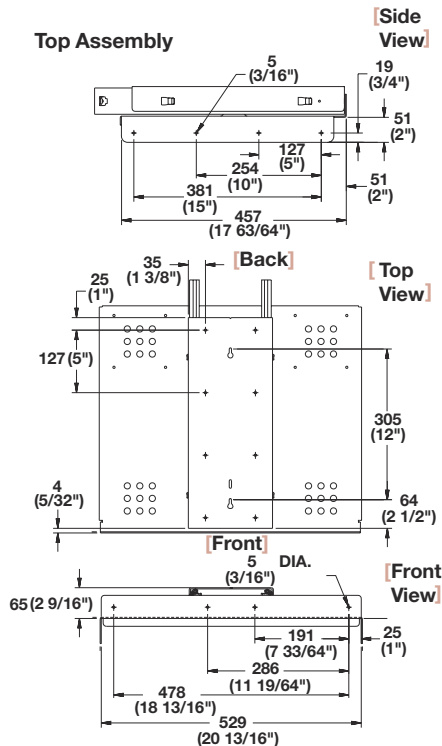
- Minimum cabinet width: 22.5"
- Minimum cabinet depth: 24"

Maximum weight capacity: **136 kg.** (300 lbs.)
Material: steel, epoxy-coated and electroplated

Color	Item No.
black	421.52.350

Packing: 1 pc. (includes mounting hardware)

Text Change



* Load rating based on 1,000 cycles

Dimensions in mm
Inches are approximate