

BANYAN CREEK-XL

PLASMA CONSOLE WITH HUTCH

LIFT FEATURES:

- *Fully assembled.
- *1 year in home parts and labor w
- *Radio Frequency Remote.
- *Universal TV mounting bracket
- *Auto reversing safety mechanism
- *Heavy duty rack and pinion driv
- *Smooth and stable travel.
- *Nearly silent operation.
- *Welded steel construction.
- *Thermal overload protection.
- *Built in wire management.
- *Patent Pending.

CABINET FEATURES:

- * Fully assembled.
- * All doors incorporate interchangeable wood or speaker cloth panels (both are included with your purchase).
- * Built-in Infrared Relay System.
- * Multi-step stain and scratch resistant finish.
- * Fully ventilated to allow for generous air circulation.



PERSPECTIVE
Shown with wooden panels on doors

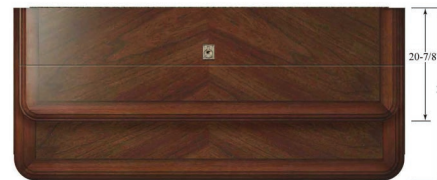
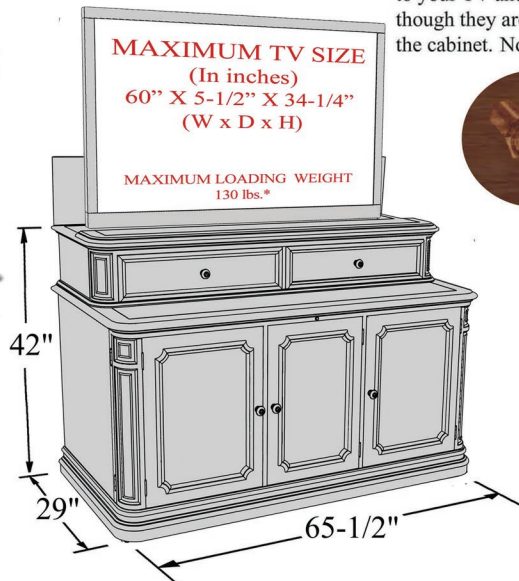


Shown with speaker cloth option on doors



Interior of Plasma Console with Hutch

Infrared relay system provides a window from your handheld remotes to your TV and audio components even though they are concealed inside the cabinet. No programming required!



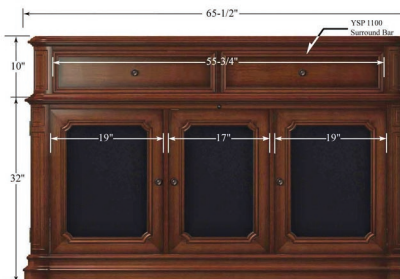
TOP VIEW



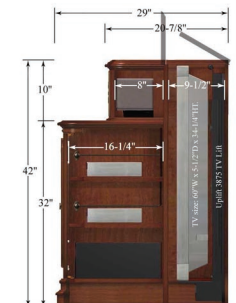
REAR VIEW



FRONT VIEW (shown with wooden panel option on doors and speaker cloth option on top drawers)



FRONT VIEW (shown with speaker cloth option on doors and wooden panel option on top drawers)



SIDE SECTION